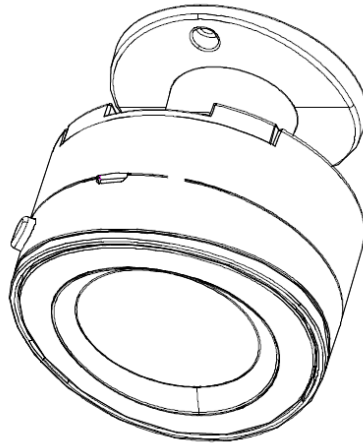




Z-WAVE MOTION SENSOR
ZSE02



Z-Wave Plus Certified Device

FEATURES

- ▶ Motion detection and wireless notifications (when included to a Z-Wave gateway controller)
- ▶ Z-Wave Plus with improved 500 chip for faster and safer wireless communication
- ▶ Two alternative power sources: 4 AAA batteries or mini USB cable (DC 5V / 1A)
- ▶ May be associated and grouped with other Z-Wave devices for advanced home automation
- ▶ Modern design will compliment any interior

SPECIFICATIONS

Model Number: ZSE02
Z-Wave Signal Frequency: 908.42 MHz
Detection Radius: 110° / 16-23 feet
Power: DC 5V/1A or 4 AAA (1.2V) batteries
Power Consumption: < 15mA when idle / < 38mA when active
Range: Up to 100 feet line of sight
Operating Temperature: 14 °F to 122 °F
Operating Humidity: ≤ 80%
Installation and Use: Indoor only

Z-WAVE COMMAND CLASSES

This device requires the following command classes to be supported and recognized by your Z-Wave controller:

COMMAND_CLASS_ZWAVEPLUS_INFO
COMMAND_CLASS_VERSION
COMMAND_CLASS_MANUFACTURE_SPECIFIC
COMMAND_CLASS_DEVICE_RESET_LOCALLY
COMMAND_CLASS_POWERLEVEL
COMMAND_CLASS_BATTERY
COMMAND_CLASS_ALARM
COMMAND_CLASS_ASSOCIATION
COMMAND_CLASS_ASSOCIATION_GRP_INFO
COMMAND_CLASS_WAKE_UP

BEFORE YOU RETURN IT

Let us know if you are having any issues installing or operating the device.
Our fast and friendly tech support is here to help every day of the year: ask@getzooz.com
Get more helpful tips at getzooz.com

INSTALLATION

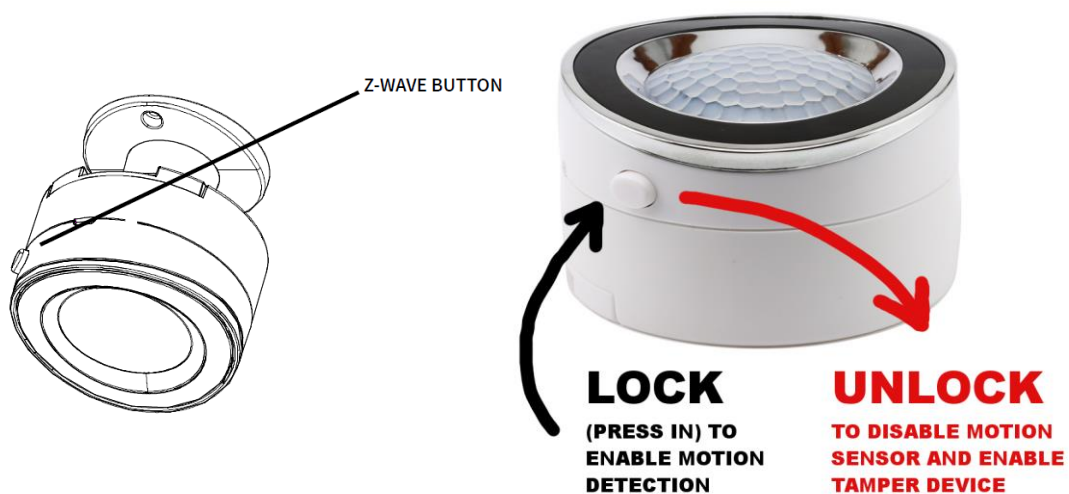
Unscrew the back cover of the motion sensor and insert 4 AAA rechargeable batteries or use the USB power adapter included in the box.

WAIT!

Include the motion sensor to your Z-Wave network before mounting it.

Z-WAVE INCLUSION

1. Bring the motion sensor within direct reach of your Z-Wave gateway controller
2. Put your Z-Wave hub in inclusion/pairing mode
3. Press the Z-Wave button on the motion sensor **TWICE** quickly (to unlock and lock it, make sure the button is pushed in when you finish the process)
4. A new motion detection device should appear on your controller's device list



Q: I have not been able to add the device to my network after several attempts. What do I do now?

A: If you are unable to include the motion sensor to your controller, please try one of the following:

- ▶ Bring the device closer to your Z-Wave controller
- ▶ Press and release the Z-Wave button quickly more than twice once you put the controller in the inclusion mode to ensure the command has gone through
- ▶ Put your controller in the EXCLUSION mode and press and release the Z-Wave button quickly 3-4 times, then try adding it to your network again

Z-WAVE EXCLUSION

1. Bring the motion sensor within direct reach of your Z-Wave gateway controller
2. Put your Z-Wave controller in exclusion/unpairing mode
3. Press the Z-Wave button on the motion sensor **TWICE** quickly (to unlock and lock it)
4. The device should disappear from your controller's device list

Please repeat the process following all steps carefully if first attempt is unsuccessful

WAKE-UP MODE

Press the Z-Wave button on the motion sensor **TWICE** quickly (to unlock and lock it) to put the sensor in a wake-up mode when changing configuration or association settings.

FACTORY RESET

If your primary controller is missing or inoperable, you may need to reset the device to factory settings. To complete the reset process manually, please press the Z-Wave button **6 TIMES** quickly (3 unlock-lock cycles).

NOTE: All previously recorded activity and custom settings will be erased from the device's memory.

ASSOCIATION

Once the Z-Wave motion sensor is added to your network, you are able to monitor its status changes from your mobile device or computer. Depending on your Z-Wave gateway's home automation software capabilities, you may be able to associate your Z-Wave motion sensor in groups with other Z-Wave devices to schedule scenes and create events. The motion sensor supports Group 1 with up to five devices for lifeline communication (Group 2-5 is not supported).

Here are the command classes supported by Group 1:

COMMAND_CLASS_BATTERY Report

COMMAND_CLASS_BASIC Set

COMMAND_CLASS_NOTIFICATION Report

COMMAND_CLASS_DEVICE_RESET_LOCALLY Notification

Please refer to your controller's user guide for advanced programming instructions as they are a little different for every software.

NOTIFICATIONS

Notification type: Burglar (0x07)

Event: 0x00 = normal status, 0x08 = trigger

This device does not use Tampering Event as notification.

LOW BATTERY REPORT

The sensor will send a low-battery notification 0xFF to all nodes in Group 1 if the power in 4 AAA batteries goes below 2.8 V.

According to GB50166-92 standard requirements, the sensor needs to be tested at least once every six months. The device needs to be cleaned and undergo maintenance every two years to ensure proper operation.

MOUNTING

Find the best spot for your Z-Wave motion sensor - a corner in the hall, basement ceiling, or anywhere else you see fit. Use the 2 screws included in the box to fix the mounting bracket to flat surface of your choice.

Once the bracket is securely installed, carefully slide the motion sensor onto the bracket and position it by tilting it to either side, upwards, or downwards.

WARNING

- ▶ Do not install the motion sensor in a place with direct sun exposure, high temperature or humidity
- ▶ Keep away from chemicals, water, and dust
- ▶ Ensure the device is never close to any heat source or open flame to prevent fire
- ▶ Ensure the device is connected to an electric power source that does not exceed the maximum load power

Z-WAVE PLUS CERTIFIED

This product can be included and operated in any Z-Wave network with other Z-Wave certified devices from other manufacturers and/or other applications. All non-battery operated nodes within the network will act as repeaters regardless of vendor to increase reliability of the network.

WARRANTY

This Limited Warranty applies to physical goods, and only for physical goods, purchased from Zooz (the "Physical Goods").

What does this limited warranty cover?

This Limited Warranty covers any defects in material or workmanship under normal use according to instructions from the User Manual during the Warranty Period. Warranty coverage applies to purchases made from authorized dealers only. See full list of Zooz distributors here: getzooz.com/buy

During the Warranty Period, Zooz will repair or replace, at no charge, products or parts of a product that prove defective because of improper material or workmanship, under normal use and recommended maintenance. Zooz does not assume the cost of return shipping for warranty service.

How long does the coverage last?

The Warranty Period for Physical Goods purchased from Zooz is 12 months from the date you purchased this product.

What does this limited warranty not cover?

This Limited Warranty does not cover any problem that is caused by:

- conditions, malfunctions or damage not resulting from defects in material or workmanship
- improper handling or installation of the product

The warranty does not cover purchases from unauthorized dealers or second-hand sources.

The warranty does not cover return shipping cost for warranty service.

What do you have to do?

To obtain warranty service, please contact us to determine the problem and offer a quick solution for you: warranty@getzooz.com

You may also get in touch with the reseller of the product directly to return or replace the product within 30 days of purchase or within applicable reseller's returns period.

IN NO EVENT SHALL ZOOZ OR ITS SUBSIDIARIES AND AFFILIATES BE LIABLE FOR ANY INDIRECT, INCIDENTAL, PUNITIVE, SPECIAL, OR CONSEQUENTIAL DAMAGES, OR DAMAGES FOR LOSS OF PROFITS, REVENUE, OR USE INCURRED BY CUSTOMER OR ANY THIRD PARTY, WHETHER IN AN ACTION IN CONTRACT, OR OTHERWISE EVEN IF ADVISED OF THE POSSIBILITY OF SUCH DAMAGES. ZOOZ'S LIABILITY AND CUSTOMER'S EXCLUSIVE REMEDY FOR ANY CAUSE OF ACTION ARISING IN CONNECTION WITH THIS AGREEMENT OR THE SALE OR USE OF THE PRODUCTS, WHETHER BASED ON NEGLIGENCE, STRICT LIABILITY, BREACH OF WARRANTY, BREACH OF AGREEMENT, OR EQUITABLE PRINCIPLES, IS EXPRESSLY LIMITED TO, AT ZOOZ'S OPTION, REPLACEMENT OF, OR REPAYMENT OF THE PURCHASE PRICE FOR THAT PORTION OF PRODUCTS WITH RESPECT TO WHICH DAMAGES ARE CLAIMED. ALL CLAIMS OF ANY KIND ARISING IN CONNECTION WITH THIS AGREEMENT OR THE SALE OR USE OF PRODUCTS SHALL BE DEEMED WAIVED UNLESS MADE IN WRITING WITHIN THIRTY (30) DAYS FROM ZOOZ'S DELIVERY, OR THE DATE FIXED FOR DELIVERY IN THE EVENT OF NONDELIVERY.

FCC NOTE

THE MANUFACTURER IS NOT RESPONSIBLE FOR ANY RADIO OR TV INTERFERENCE CAUSED BY UNAUTHORIZED MODIFICATIONS TO THIS EQUIPMENT. SUCH MODIFICATIONS COULD VOID THE USER'S AUTHORITY TO OPERATE THE EQUIPMENT. STORE INDOORS WHEN NOT IN USE. SUITABLE FOR DRY LOCATIONS ONLY. DO NOT IMMERSE IN WATER. NOT FOR USE WHERE DIRECTLY EXPOSED TO WATER.

This device complies with Part 15 of the FCC Rules.

Operation is subject to the following conditions:

1. This device may not cause harmful interference,
2. This device must accept any interference received, including interference that may cause undesired operation.

This equipment has been tested and found to comply with the limits for a Class B digital device, pursuant to part 15 of the FCC Rules.

These limits are designed to provide reasonable protection against harmful interference in a residential installation.

This equipment generates, uses and can radiate radio frequency energy and, if not installed and used according to instructions, may cause harmful interference to radio communications.

However, there is no guarantee that interference will not occur in any given installation.

If this equipment causes harmful interference to radio or television reception, the user may try to correct the interference by taking one or more of the following measures:

- Reorient or relocate receiving antenna
- Increase the separation between equipment and receiver
- Connect equipment into a separate outlet or circuit from receiver
- Consult the dealer or an experienced radio/TV technician for additional assistance

All brand names displayed are trademarks of their respective holders.

[c] Zooz 2017