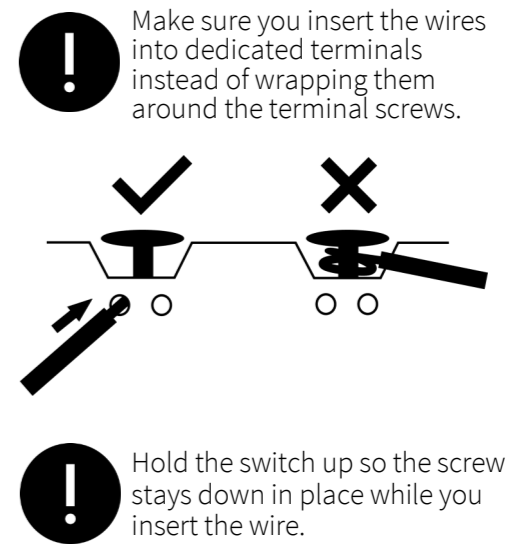
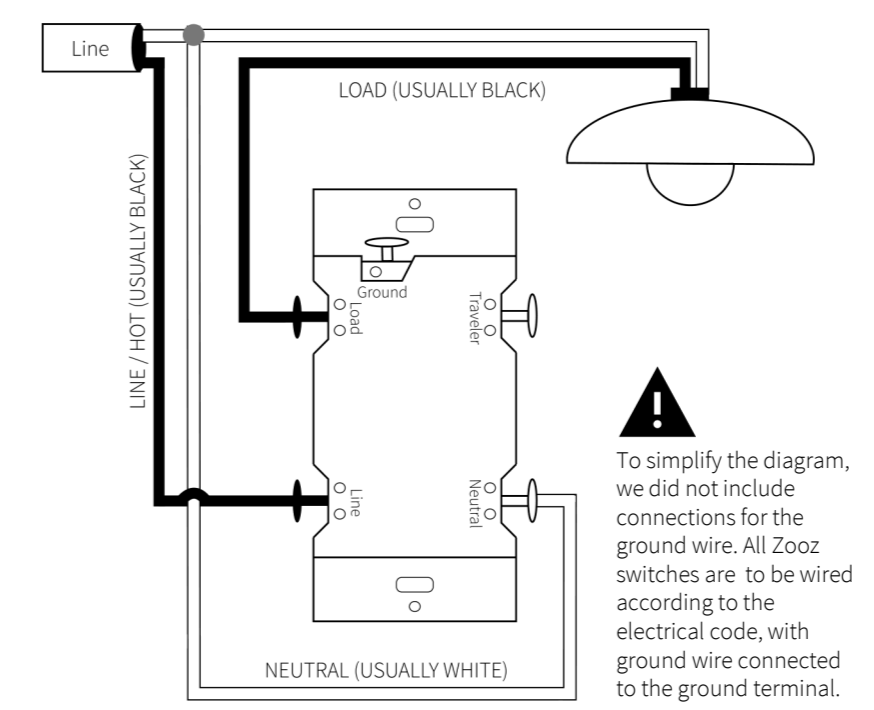


DO NOT CONNECT TO CEILING FANS, MOTORS, OR HOME APPLIANCES.

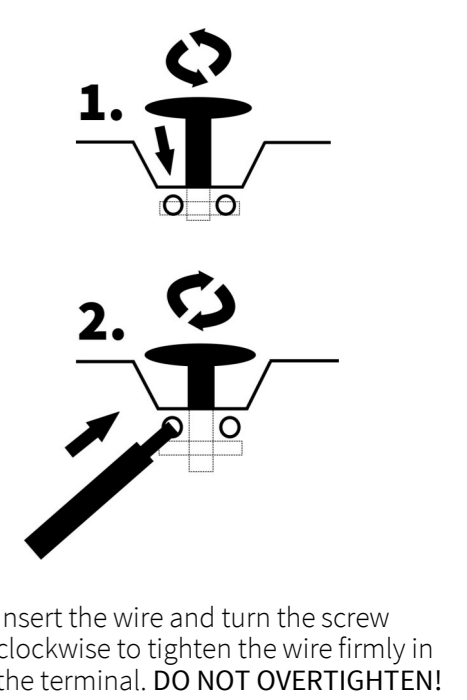
Canadian Electrical Code and all applicable local regulations.

5. Disconnect all wires from the old switch, labeling selected wires if necessary
6. Verify that you are dealing with **14 AWG copper wire** as this is the only approved type of wiring for this installation. If you have 12 AWG wiring in the box, you need to provide 14 AWG connection to the switch terminals
7. Connect the wires to the terminals of your new Z-Wave switch, starting with ground

ZOOZ DIMMER SWITCH ZEN22 WIRING DIAGRAM FOR SINGLE-POLE INSTALLATION



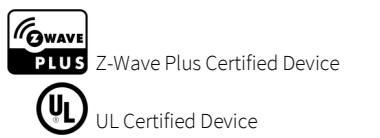
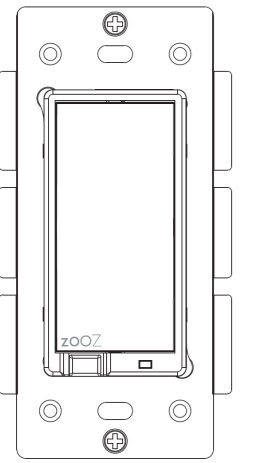
1. Loosen the terminal screws by carefully turning them counter clockwise to make space for the wire. **DO NOT unscrew them completely.**



2. Insert the wire and turn the screw clockwise to tighten the wire firmly in the terminal. **DO NOT OVERTIGHTEN!**

Always turn the screws CLOCKWISE to tighten the wires.

ZOOZ™
bright ideas
Z-WAVE DIMMER SWITCH V.2
ZEN22



- ▶ Manual or remote on/off and dimming control from your mobile device or computer (when included to a Z-Wave gateway controller)
- ▶ Universal 3-way capability – works with existing 3-way switches as long as neutral is present
- ▶ Z-Wave Plus with improved 500 chip for faster and safer wireless communication
- ▶ Works with LED, CFL, and incandescent bulbs
- ▶ Remembers and restores on/off / brightness status after power failure
- ▶ Based on universal multilevel switch command class - supported by most Z-Wave controllers
- ▶ May be associated and grouped with other Z-Wave devices for advanced home automation
- ▶ Customizable LED indicator
- ▶ Air-gap switch for added safety
- ▶ Modern paddle design
- ▶ Built-in Z-Wave signal repeater for a stronger, more reliable network

Z-WAVE COMMAND CLASSES

This device requires the following command classes to be supported and recognized by your Z-Wave controller:

```

COMMAND_CLASS_ASSOCIATION_V2
COMMAND_CLASS_ASSOCIATION_GRP_INFO
COMMAND_CLASS_BASIC
COMMAND_CLASS_CONFIGURATION
COMMAND_CLASS_DEVICE_RESET_LOCALLY
COMMAND_CLASS_MANUFACTURER_SPECIFIC
COMMAND_CLASS_POWERLEVEL
COMMAND_CLASS_SWITCH_ALL
COMMAND_CLASS_SWITCH_MULTILEVEL
COMMAND_CLASS_VERSION_V2
COMMAND_CLASS_ZWAVEPLUS_INFO_V2
    
```

WIRELESS CONTROL

- ▶ After power failure, the switch will automatically turn on to the last brightness level. In a 3-way installation, the slave (mechanical switch) can only turn the light on or off. The slave switch will always turn the light on only to the last brightness level. **Dimming is only available from the master Zooz switch and your Z-Wave software.**

Z-WAVE INCLUSION

1. Bring your Z-Wave gateway hub or controller as close to the switch as possible
2. Put your Z-Wave controller into inclusion mode
3. Tap the **upper paddle** of the switch 3 times very quickly to finalize the inclusion process
4. A new dimming device will appear on your controller's device list

TROUBLESHOOTING TIPS:

If you are unable to include the Z-Wave switch to your controller, please try one

FACTORY RESET

- ▶ Bring the controller closer to your Z-Wave switch or use a hand-held secondary controller for inclusion
- ▶ Tap the **upper paddle** of the switch at least 6 or 7 times once you put the hub into inclusion mode to ensure the command has gone through
- ▶ Put your controller into EXCLUSION mode and tap the **lower paddle** of the switch 3 times very quickly, then try adding it to your network again

Z-WAVE EXCLUSION

1. Bring your Z-Wave gateway hub or controller as close to the switch as possible
2. Put your Z-Wave controller into exclusion mode
3. Tap the **lower paddle** of the switch 3 times very quickly to finalize the exclusion process
4. The device will disappear from your controller's device list

Please repeat the process following all steps carefully if the first attempt is unsuccessful.

ASSOCIATION

Once the Z-Wave switch is added to your network, you are able to turn the device on or off and adjust brightness remotely from your mobile device, computer, or Z-Wave remote control. Depending on your Z-Wave gateway's home automation software capabilities, you may be able to associate your Z-Wave switch in groups with other Z-Wave devices to schedule scenes and create events. This dimmer switch supports Group 1 with up to 5 devices for lifeline communication. This device will send MULTILEVEL REPORT to Group 1

ADVANCED SETTINGS

If your controller's software allows for advanced configuration and parameter adjustment, you will be able to change and save the settings below and customize the switch to serve your needs.

ENABLE / DISABLE LED INDICATOR

Parameter 3: Enable or disable the LED indicator completely so it stays off at all times
Values: 0 – LED indicator is enabled (default); 1 – LED indicator is disabled
Size: 1 byte dec.

PADDLE CONTROL

Parameter 1: Choose if you want the upper paddle to turn the light on or turn the light off when tapped
Values: 0 – Upper paddle turns the light on, lower paddle turns the light off (default); 1 – Upper paddle turns the light off, lower paddle turns the light on
Size: 1 byte dec.

LED INDICATOR CONTROL

Parameter 2: Choose if you want the LED indicator to turn on when the switch (light) is on or off
Values: 0 – LED indicator is on when

switch is off, LED indicator is off when switch is on (default); 1 – LED indicator is on when switch is on, LED indicator is off when switch is off
Size: 1 byte dec.

WARNING

- ▶ This product should be installed indoors upon completion of any building renovations
- ▶ Prior to installation, the device should be stored in a dry, dust-and-mold-proof place
- ▶ Do not install the switch in a place with direct sun exposure, high temperature or humidity
- ▶ Keep away from chemicals, water, and dust

Z-WAVE PLUS CERTIFIED

This product can be included and operated in any Z-Wave network with other Z-Wave certified devices from other manufacturers and/or other applications. All non-battery operated nodes within the network will act as repeaters regardless of vendor to increase reliability of the network.

UL CERTIFIED

This is an UL certified device. UL, just like ETL, is a Nationally Recognized Testing Laboratory. The UL mark is proof of product compliance to North American safety standards.

WARRANTY

This Limited Warranty applies to physical goods, and only for physical goods, purchased from Zooz (the "Physical Goods").

What does this limited warranty cover?
This Limited Warranty covers any defects in material or workmanship under normal use

Ensure the device is never close to any heat source or open flame to prevent fire

Ensure the device is connected to an electric power source that does not exceed the maximum load power

No part of the device may be replaced or repaired by the user

How long does the coverage last?

The Warranty Period for Physical Goods purchased from Zooz is 12 months from the date you purchased this product.

What does this limited warranty not cover?

- This Limited Warranty does not cover any problem that is caused by:
- ▶ conditions, malfunctions or damage not resulting from defects in material or workmanship
 - ▶ improper handling or installation of the product
- The warranty does not cover purchases from unauthorized dealers or second-hand sources. The warranty does not cover return shipping cost for warranty service.

What do you have to do?

To obtain warranty service, please contact us to determine the problem and offer a quick solution

for you: warranty@getzooz.com
You may also get in touch with the reseller of the product directly to return or replace the product within 30 days of purchase or within applicable reseller's returns period.

IN NO EVENT SHALL ZOOZ OR ITS SUBSIDIARIES AND AFFILIATES BE LIABLE FOR ANY INDIRECT, INCIDENTAL, PUNITIVE, SPECIAL, OR CONSEQUENTIAL DAMAGES, OR DAMAGES FOR LOSS OF PROFITS, REVENUE, OR USE INCURRED BY CUSTOMER OR ANY THIRD PARTY, WHETHER IN AN ACTION IN CONTRACT, OR OTHERWISE EVEN IF ADVISED OF THE POSSIBILITY OF SUCH DAMAGES. ZOOZ'S LIABILITY AND CUSTOMER'S EXCLUSIVE REMEDY FOR ANY CAUSE OF ACTION ARISING IN CONNECTION WITH THIS AGREEMENT OR THE SALE OR USE OF THE PRODUCTS, WHETHER BASED ON NEGLIGENCE, STRICT LIABILITY, BREACH OF WARRANTY, BREACH OF AGREEMENT, OR EQUITABLE PRINCIPLES, IS EXPRESSLY LIMITED TO, AT ZOOZ'S OPTION, REPLACEMENT OF, OR REPAYMENT OF THE PURCHASE PRICE FOR THAT PORTION OF PRODUCTS WITH RESPECT TO WHICH DAMAGES ARE CLAIMED. ALL CLAIMS OF ANY KIND ARISING IN CONNECTION WITH THIS AGREEMENT OR THE SALE OR USE OF PRODUCTS SHALL BE DEEMED WAIVED UNLESS MADE IN WRITING WITHIN THIRTY (30) DAYS FROM ZOOZ'S DELIVERY, OR THE DATE FIXED FOR DELIVERY IN THE EVENT OF NONDELIVERY.

FCC NOTE
THE MANUFACTURER IS NOT RESPONSIBLE FOR ANY RADIO OR TV INTERFERENCE CAUSED BY UNAUTHORIZED MODIFICATIONS TO THIS EQUIPMENT. SUCH MODIFICATIONS COULD VOID THE USER'S AUTHORITY TO OPERATE THE EQUIPMENT. STORE INDOORS WHEN NOT IN USE. SUITABLE FOR DRY LOCATIONS ONLY. DO NOT IMMERSE IN WATER. NOT FOR USE WHERE DIRECTLY EXPOSED TO WATER.

This device complies with Part 15 of the FCC Rules. Operation is subject to the following conditions:
1. This device may not cause harmful interference.
2. This device must accept any interference received, including interference that may cause undesired operation.

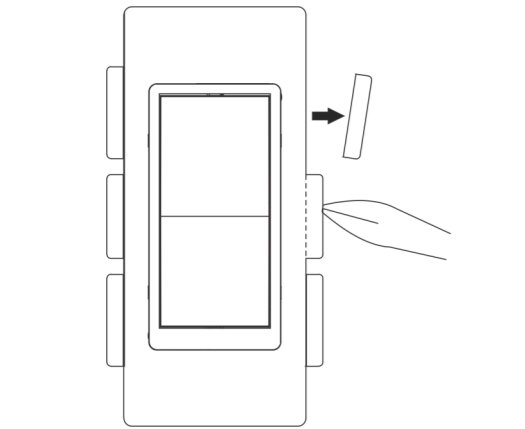
This equipment has been tested and found to comply with the limits for a Class B digital device, pursuant to part 15 of the FCC Rules. These limits are designed to provide reasonable protection against harmful interference in a residential installation. This equipment generates, uses and can radiate radio frequency energy and, if not installed and used according to instructions, may cause harmful interference to radio communications. However, there is no guarantee that interference will not occur in any given installation. If this equipment causes harmful interference to radio or television reception, the user may try to correct the interference by taking one or more of the following measures:
- Reorient or relocate receiving antenna
- Increase the separation between equipment and receiver
- Connect equipment into a separate outlet or circuit from receiver
- Consult the dealer or an experienced radio/TV technician for additional assistance

All brand names displayed are trademarks of their respective holders.
© Zooz 2017

ask@getzooz.com
www.getzooz.com

8. Secure your Z-Wave switch in the box with mounting screws, handling the wires with care.

For multi-gang-box installation, you may need to break the side tabs off with pliers to fit the dimmer next to the neighboring switches



9. Install the wall plate with the included short screws